

BOX SCORE: *** FINAL ***

Date: 03-18-88 Site: State Tourney, Louisville Attendance: 17,565

Team: Warren East

NO.	NAME	TOTAL FG		3-POINT		FT	FTA	REB			PF	TP	A	TO	BLK	S	MIN	
		FG	FGA	FG	FGA			O	D	T								
23	Dunn, Corey	7	14	0	1	3	4	2	4	5	5	17	2	5	0	1	33	
55	Whitney, Jeff	3	7	0	0	6	6	2	4	6	3	12	1	3	1	0	34	
51	Jones, Monty	1	1	0	0	1	2	0	0	0	2	3	0	2	0	0	12	
21	Compton, Brian	0	2	0	0	0	0	1	1	2	3	0	1	4	1	1	20	
33	Johnson, Greg	10	14	0	0	0	3	1	5	7	4	20	0	3	0	0	34	
25	Crain, James	1	1	0	0	2	2	1	2	3	4	4	0	1	0	1	23	
35	Smith, Jonathan	0	3	0	1	1	3	3	0	3	3	1	1	0	0	0	11	
11	Sorrell, Ervin	0	0	0	0	0	0	0	0	0	0	0	1	0	0	0	4	
45	Crump, Keith	0	0	0	0	0	0	0	0	0	0	0	0	0	0	0	1	
41	Hill, Shannon	0	0	0	0	0	0	0	0	0	0	0	0	0	0	0	1	
31	Carter, Paul	0	0	0	0	0	0	0	0	0	0	0	0	0	0	0	1	
15	Shobe, Shawn	0	0	0	0	0	0	0	0	0	0	0	0	0	0	0	1	
TEAM																		
TOTALS		22	42	0	2	13	20	11	19	20	24	57	6	18	2	3	175	

Percentages:	Game	FG	22/42	52.4%	3-PT.	0/2	0.0%	FT	13/20	65.0%
Period 1	6/9	66.7%	0/0	0.0%	1/3	33.3%				
Period 2	4/9	44.4%	0/0	0.0%	3/3	100.0%				
Period 3	5/7	71.4%	0/0	0.0%	0/0	0.0%				
Period 4	5/10	50.0%	0/0	0.0%	7/10	70.0%				
Period 5	2/7	28.6%	0/2	0.0%	2/3	66.7%				

Team: Apollo

NO.	NAME	TOTAL FG		3-POINT		FT	FTA	REB			PF	TP	A	TO	BLK	S	MIN	
		FG	FGA	FG	FGA			O	D	T								
14	Williams, Eric	5	7	0	0	4	5	2	5	8	3	14	1	3	1	3	33	
23	Thompson, Kevin	5	8	1	2	11	12	0	1	1	4	22	2	1	0	3	33	
45	Beehn, Zane	2	4	0	0	2	2	2	2	4	4	6	2	1	0	0	23	
05	Leachman, A.	2	7	2	2	1	2	0	0	0	2	7	0	5	0	2	34	
12	Johnson, A.	2	10	0	1	12	14	0	4	4	3	16	2	2	0	1	34	
11	Dobbs, Jason	0	0	0	0	0	0	0	0	0	0	0	1	0	0	0	1	
35	Yewell, Jason	1	1	0	0	0	1	0	1	1	0	2	0	0	0	1	12	
10	Shelton, Kevin	0	1	0	0	0	0	0	0	0	0	0	0	0	0	0	1	
34	Miller, David	0	1	0	0	0	0	1	0	1	0	0	0	0	0	0	1	
33	Puckett, Jay	1	1	0	0	0	0	1	0	1	0	2	0	0	0	0	1	
50	Thornton, H.	0	0	0	0	0	0	0	0	0	0	0	0	0	0	0	1	
30	Survant, Bob	0	0	0	0	0	0	0	0	0	0	0	0	0	0	0	1	
TEAM																		
TOTALS		18	40	3	5	30	36	6	14	20	18	69	8	12	1	10	175	

Percentages:	Game	FG	18/40	45.0%	3-PT.	3/5	60.0%	FT	30/36	83.3%
Period 1	6/13	46.2%	0/0	0.0%	3/4	75.0%				
Period 2	1/7	14.3%	1/2	50.0%	8/10	80.0%				
Period 3	5/7	71.4%	1/1	100.0%	0/0	0.0%				
Period 4	4/9	44.4%	1/2	50.0%	5/7	71.4%				
Period 5	2/4	50.0%	0/0	0.0%	14/15	93.3%				

OFFICIALS: Burney Jenkins, Ron Monk, Alt-R. Chasteen
 Technicals: None

SCORE BY PERIODS						
Warren East	13	11	10	17	6	= 57
Apollo	15	11	11	14	18	= 69

Player	Team	Apollo	Time	Score	Warren East	Player	Team
Beehn, Zane, Johnson, A.	Warren East	Williams, Eric, Thompson, Kevin, Leachman, A.			Crain, James, Whitney, Jeff, Johnson, Greg, Dunn, Corey, Compton, Brian		
		Ball to Eagles					
3-4	75.0%	18-23 78.2%	Williams, Eric, 2 Free Throws made both	5 2:58	Foul on Compton, Brian	3	9
4		9	Foul on Thompson, Kevin	5 2:58 *53-51			
				5 2:36			
5-7	71.4%	17-37 45.9%	3 ft Lane Turnaround by Williams, Eric., made	5 2:36 53-53*	Sub In: Smith, Jonathan Out: Compton, Brian	6-6	100% 13-19 68.4%
2		8	Assist by Beehn, Zane	5 2:23 *55-53	Whitney, Jeff, 2 Free Throws made both		
4-5	80.0%	19-24 79.1%	Williams, Eric, 1 Free Throw made	5 2:23	Foul on Dunn, Corey	4	10
				5 2:23 *56-53			
				5 2:14	Bad Pass by Dunn, Corey	5	18
				5 2:14	Sub In: Sorrell, Ervin Out: Dunn, Corey		
				5 1:54	Foul on Johnson, Greg	3	11
11-12	91.5%	21-25 80.7%	Thompson, Kevin, 1 & Bonus made both	5 1:54 *58-53			
				5 1:54	Sub In: Dunn, Corey Out: Sorrell, Ervin		
7-8	87.5%	23-28 82.1%	Johnson, A., 1 & Bonus made both	5 1:43 58-55*	10 ft Lane Turnaround by Johnson, Greg, made	10-13	76.9% 21-36 58.3%
D-1 Tot-1		D-3 Tot-16	Rebound by Beehn, Zane	5 1:08	Foul on Smith, Jonathan	2	12
				5 1:08 *60-55			
				5 1:00	8 ft Left Base Line Bank by Dunn, Corey, missed	7-13	53.8% 21-37 56.7%
				5 1:00			
2-2	100%	25-30 83.3%	Beehn, Zane, 1 & Bonus made both	5 0:59 *62-55	Foul on Smith, Jonathan	3	13
D-2 Tot-2		D-4 Tot-17	Rebound by Beehn, Zane	5 0:59	Sub In: Compton, Brian Out: Smith, Jonathan		
				5 0:50	Driving Layup by Johnson, Greg, missed	10-14	71.4% 21-38 55.2%
9-10	90.0%	27-32 84.3%	Johnson, A., 1 & Bonus made both	5 0:48		4	14
				5 0:39 *64-55	Foul on Crain, James		
				5 0:39			
			REB: 17 A: 8 BLK: 1 TO: 12 PF: 9	5 0:29	3 pt 21 ft Left Angle Jump shot by	0-2	00.0% 21-39 53.8%
			S: 10 FT: 27-32 84.3% FG: 17-37 45.9%	5 0:29	Smith, Jonathan, missed	0-3 Tot-3	0-6 Tot-27
			T I M E - O U T Warren East No. 1	5 0:29	Rebound by Smith, Jonathan		
				5 0:29			
				5 0:29	Sub In: Smith, Jonathan Out: Crain, James		
				5 0:28	Smith, Jonathan, 1 & Bonus missed 1st	1-3	33.3% 13-20 65.0%
				5 0:21	Rebound by Smith, Jonathan	0-4 Tot-4	0-7 Tot-28
				5 0:21	17 ft Left Angle Jump shot by		
				5 0:21	Smith, Jonathan, missed	0-3	00.0% 21-40 52.5%
				5 0:21	Rebound by Dunn, Corey	0-2 Tot-2	0-8 Tot-29
				5 0:21 64-57*	Driving Layup by Whitney, Jeff, made	3-7	42.8% 22-41 53.6%
			REB: 29 A: 6 BLK: 2 TO: 18 PF: 14	5 0:21			
			S: 3 FT: 13-20 65.0% FG: 22-41 53.6%	5 0:18	Foul on Johnson, Greg	4	15
			T I M E - O U T Warren East No. 2	5 0:18 *65-57			
10-12	83.3%	28-34 82.3%	Johnson, A., 1 & Bonus made 1st missed 2nd	5 0:17	Rebound by Dunn, Corey	D-1 Tot-3	D-6 Tot-30
				5 0:12	3 pt 22 ft Straight Away Jump shot by	7-14	50.0% 22-42 52.3%
					Dunn, Corey, missed		
D-2 Tot-2		D-5 Tot-18	Rebound by Johnson, A.	5 0:10	Foul on Dunn, Corey	5	16
				5 0:10	Subs In: Crump, Keith, Hill, Shannon, Carter, Paul, Shobe, Shawn, Sorrell, Ervin		
				5 0:10	Out: Compton, Brian, Dunn, Corey, Johnson, Greg, Smith, Jonathan, Whitney, Jeff.		
12-14	85.7%	30-35 83.3%	Johnson, A., 2 Shot Intentional made both	5 0:10 *67-57			
			Subs In: Shelton, Kevin, Miller, David, Puckett, Jay, Thornton, H.	5 0:10			
			Survant, Bob				
			Out: Leachman, A., Johnson, A., Williams, Eric, Thompson, Kevin, Beehn, Zane				
0-1	00.0%	17-38 44.7%	16 ft Left Base Line Jump shot by Shelton, Kevin, missed	5 0:03			
0-1 Tot-1		0-2 Tot-19	Rebound by Miller, David	5 0:01			
0-1	00.0%	17-39 43.5%	4 ft Lane Follow by Miller, David, missed	5 0:01			
0-1 Tot-1		0-3 Tot-20	Rebound by Puckett, Jay	5 0:01			
1-1	100%	18-40 45.0%	5 ft Lane Follow by Puckett, Jay, made	5 0:01 *71-57			

2nd Half Play by Play (continued)

PAGE : 3

Player	Team	Apollo	Time	Score	Warren East	Player	Team
1	9	Steal by Yewell, Jason	4	2:34			
			4	2:31	Bad Pass by Dunn, Corey	4	16
2-8	25.0%	15-32 45.8%	16 ft Left Base Line Jump shot by Johnson, A., made	4	2:15 *49-49		
2	10	Steal by Williams, Eric	4	1:30			
			4	1:29	Bad Pass by Whitney, Jeff	3	17
2-7	28.5%	15-33 45.4%	Layup Off Fast Break by Leachman, A., missed	4	1:25		
			4	1:24	Foul on Whitney, Jeff	3	8
			4	1:25			
			T I M E - O U T Warren East No. 2				
0-1	00.0%	16-21 76.1%	Yewell, Jason, 1 & Bonus missed 1st	4	1:25		
				4	1:23	Rebound by Johnson, Greg	D-2 Tot-2 D-4 Tot-24
				4	1:07	8 ft Left Side Bank by Johnson, Greg, missed	8-11 72.7% 19-33 57.5%
				4	1:05	Rebound by Johnson, Greg	0-1 Tot-3 D-5 Tot-25
				4	1:05 49-51*	Follow Layup by Johnson, Greg, made	9-12 75.0% 20-34 58.8%
2-9	22.2%	15-34 44.1%	12 ft Left Angle Jump shot by Johnson, A., missed	4	0:50		
D-1 Tot-3	0-1 Tot-14		Rebound by Williams, Eric	4	0:47		
4-6	66.6%	16-35 45.7%	4 ft Lane Follow by Williams, Eric, made	4	0:47 *51-51		
				4	0:22	19 ft Right Side Jump shot by Dunn, Corey, missed	7-12 58.3% 20-35 57.1%
D-1 Tot-1	D-2 Tot-15		Rebound by Johnson, A.	4	0:21		
2-10	20.0%	16-36 44.4%	18 ft Right Base Line Jump shot by Johnson, A., missed	4	0:03		
				4	0:01	Rebound by Crain, James	D-2 Tot-2 D-5 Tot-26

Player	Team	Apollo	Time	Score	Warren East	Player	Team
Williams, Eric	Thompson, Kevin	Beehn, Zane			Dunn, Corey	Whitney, Jeff	Jones, Monty
		Leachman, A., Johnson, A.			Compton, Brian	Johnson, Greg	
			4 7:47		Ball to Raiders		
			4 7:43		12 ft Left Base Line Jump shot by Smith, Jonathan, missed	0-1	00.0% 15-26 57.6%
			4 7:43	37-36*	Rebound by Dunn, Corey	0-1	Tot-1 0-1 Tot-17
			4 7:34		3 ft Lane Follow by Dunn, Corey, made	5-8	62.5% 16-27 59.2%
1-6	16.6%	12-28 42.5%	4 7:25		Rebound by Crain, James	D-1	Tot-1 D-1 Tot-18
			4 7:06	37-38*	18 ft Right Angle Jump shot by Whitney, Jeff, made	2-5	40.0% 17-28 60.7%
			4 6:58		Sub In: Smith, Jonathan Out: Jones, Monty		
			4 6:58		Sub In: Crain, James Out: Compton, Brian		
			4 6:58		Foul on Crain, James	2	3
			4 6:41		Foul on Dunn, Corey	3	4
1-7	14.2%	12-29 41.3%	4 6:39				
			4 6:38		Rebound by Whitney, Jeff	D-1	Tot-1 D-2 Tot-19
			4 6:22				
2	3	Foul on Johnson, A.	4 6:21		Johnson, Greg, 2 Free Throws missed both	0-3	00.0% 4-9 44.4%
			4 6:20		Rebound by Whitney, Jeff	0-1	Tot-2 D-2 Tot-20
2	4	Foul on Beehn, Zane	4 6:18				
			4 6:18	37-40*	Whitney, Jeff, 2 Free Throws made both	2-2	100% 6-11 54.5%
2-6	33.3%	13-30 43.3%	4 5:57	*40-40			
			4 5:45				
			4 5:45	40-42*	Whitney, Jeff, 1 & Bonus made both	4-4	100% 8-13 61.5%
			4 5:26		Foul on Johnson, Greg	2	5
			4 5:26	*41-42			
3-4	75.0%	12-16 75.0%	4 5:25		Rebound by Johnson, Greg	D-1	Tot-1 D-3 Tot-21
			4 5:02		8 ft Left Angle Jump shot by Dunn, Corey, missed	5-9	55.5% 17-29 58.6%
			4 5:01		Rebound by Smith, Jonathan	0-1	Tot-1 D-3 Tot-22
1	1	Block by Williams, Eric	4 5:01				
3	6	Foul on Williams, Eric	4 5:01				
		Sub In: Yewell, Jason Out: Beehn, Zane	4 5:01				
			4 5:01	41-43*	Smith, Jonathan, 2 Free Throws made 1st missed 2nd	1-2	50.0% 9-15 60.0%
			4 4:59		Rebound by TEAM	0-2	Tot-2 D-4 Tot-23
			4 4:58		15 ft Left Base Line Jump shot by Whitney, Jeff, missed	2-6	33.3% 17-30 56.6%
D-1	Tot-1	D-1 Tot-13	4 4:42				
			4 4:32		Foul on Smith, Jonathan	1	6
5-6	83.3%	14-18 77.7%	4 4:32	*43-43			
			4 4:32		Sub In: Compton, Brian Out: Smith, Jonathan		
1	7	Steal by Williams, Eric	4 4:11				
			4 4:09		Bad Pass by Dunn, Corey	3	14
3-5	60.0%	14-31 45.1%	4 3:58	*45-43			
			4 3:37				
			4 3:37		Dribbling Error on Whitney, Jeff	2	15
4	10	5 Second In-bounds Violation on Leachman, A.,	4 3:37				
3	7	Foul on Johnson, A.	4 3:34				
			4 3:34	45-45*	Dunn, Corey, 2 Free Throws made both	3-4	75.0% 11-17 64.7%
5	11	Bad Pass by Leachman, A.,	4 3:32				
			4 3:33				
			4 3:30	45-47*	4 ft Lane Bank by Dunn, Corey, made	6-10	60.0% 18-31 58.0%
			4 3:17		Foul on Crain, James	3	7
			4 3:17	*47-47			
9-10	90.0%	16-20 80.0%	4 2:58	47-49*	Driving Layup by Dunn, Corey, made	7-11	63.5% 19-32 59.3%
			4 2:37				
3	8	Player Control Foul on Thompson, Kevin	4 2:37				
1	12	Player Control Foul Thompson, Kevin					

REB: 13 A: 7 BLK: 1 TD: 11 PF: 7
S: 8 FT: 14-18 77.7% FG: 14-31 45.1%

No. 1 Apollo TIME - D U T

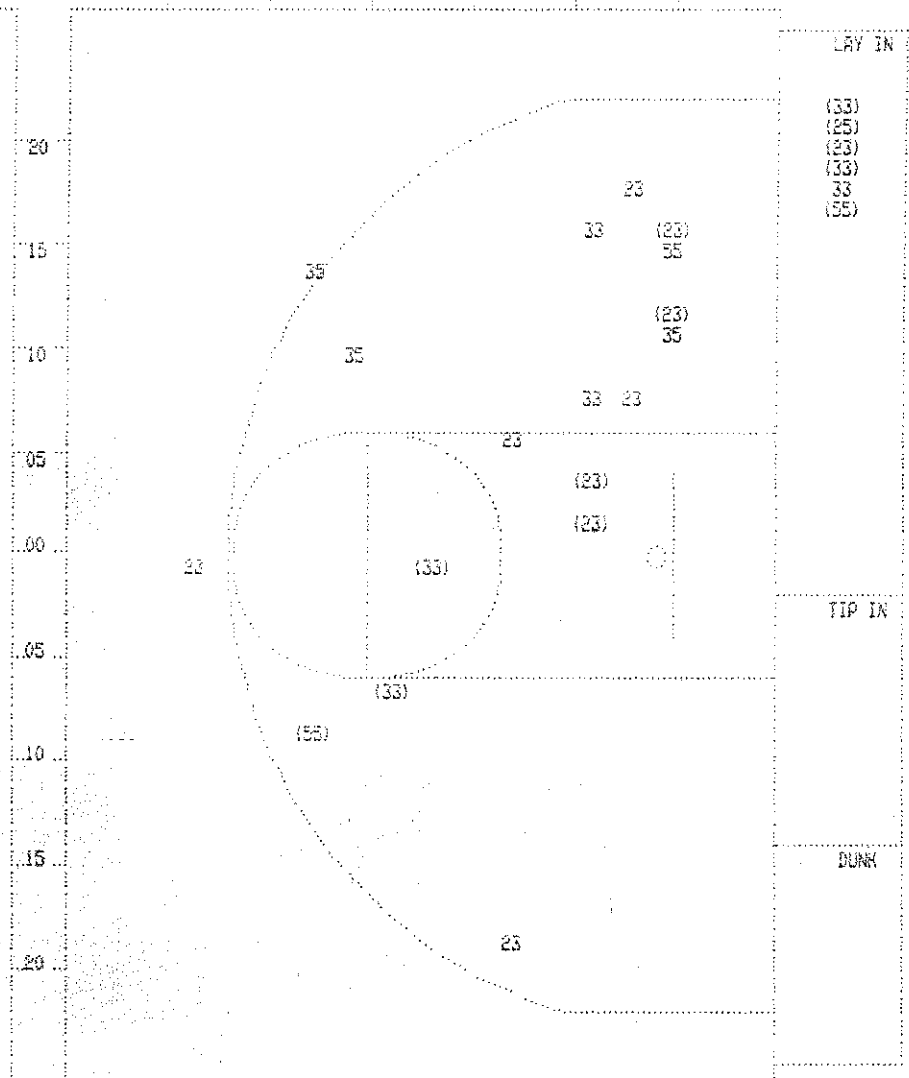
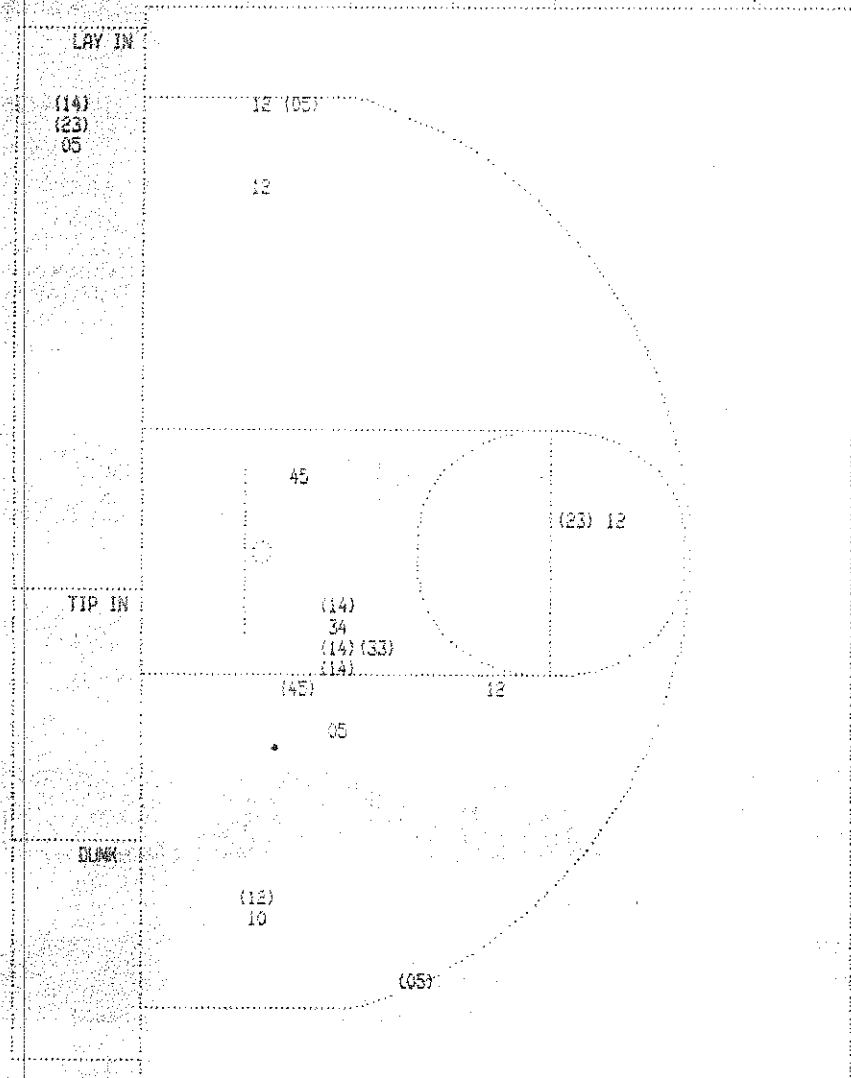
REB: 23 A: 6 BLK: 2 TD: 15 PF: 6
S: 3 FT: 11-17 64.7% FG: 17-30 56.5%

Warren East "Raiders" vs Apollo "Eagles"
 Half Play by Play

Tip off at 2:30 p.m. on 03/18/88 at State Tourney, Louisville
 Produced by the K.H.S.A.A. Stat Crew with FINAL III™

PAGE : 1

Player	Team	Apollo	Time	Score	Warren East	Player	Team
James, Eric	Thompson	Kevin, Beehn, Zane, Leachman, A., Johnson, A.			Dunn, Corey, Whitney, Jeff, Jones, Monty, Compton, Brian, Johnson, Greg		
		Ball to Eagles					
	50.0%	8-21 38.0%			3 7:49 *28-24		
1		Driving Reverse Lay Up by Williams, Eric	3	7:32			
		Assist by Beehn, Zane					
2		Foul on Thompson, Kevin	3	7:31	28-26*	12 ft Left Base Line Turnaround by Dunn, Corey	3-5 50.0% 11-19 57.8%
					3 6:14	Sub In: Crain, James Out: Jones, Monty	
	57.1%	9-23 39.1%			3 5:33 *30-26		
		Driving Scoop by Thompson, Kevin	3	5:05	30-28*	Driving Layup by Johnson, Greg	7-9 77.7% 12-22 54.5%
					3 4:14	Sub In: Smith, Jonathan Out: Compton, Brian	
	65.6%	10-24 41.6%			3 3:51 *32-28		
	62.5%	11-25 44.0%			3 3:10 *34-28		
2		6 ft Left Base Line Bank by Beehn, Zane					
		14 ft Lane Jump shot by Thompson, Kevin					
		Assist by Johnson, A.					
		REB: 12 A: 6 BLK: 0 TD: 5 PF: 1			3 3:07	REB: 16 A: 5 BLK: 2 TD: 10 PF: 0	
		S: 5 FT: 11-14 78.5% FG: 11-25 44.0%			T I M E - O U T Warren East No. 1	S: 2 FT: 4-7 57.1% FG: 12-22 54.5%	
					3 2:44	34-30* 13 ft Lane Jump shot by Johnson, Greg	8-10 80.0% 13-23 56.5%
					3 2:09	34-32* 16 ft Left Base Line Jump shot by Dunn, Corey	4-7 57.1% 14-24 58.3%
						Assist by Smith, Jonathan	1 6
2		Player Control Foul on Leachman, A.,	3	1:38			
					3 1:04	34-34* Turnaround Layup by Crain, James	1-1 100% 15-25 60.0%
					3 0:41	Foul on Whitney, Jeff	2 1
					3 0:40	Foul on Johnson, Greg	1 2
	20.0%	12-27 44.4%			3 0:04	*37-34	
		3 pt 21 ft Left Side Jump shot by Leachman, A.,					



Apollo					
Player		Player	Player		
14 - Williams,	4 / 4 100.0%	10 - Shelton, K	0 / 1 0.0%		
23 - Thompson,	2 / 2 100.0%	33 - Puckett, J	1 / 1 100.0%		
45 - Beehn, Ian	1 / 2 50.0%	34 - Miller, Da	0 / 1 0.0%		
05 - Leachman,	2 / 4 50.0%				
12 - Johnson, A	1 / 5 20.0%				
Layups	1-9 Ft	10-15 Ft	Over 15 Ft	3 Pointers	Total
2 / 3	5 / 8	1 / 2	1 / 4	2 / 3	11 / 20
66.7%	62.5%	50.0%	25.0%	66.7%	55.0%

Warren East					
Player		Player	Player		
23 - Dunn, Core	5 / 10 50.0%				
55 - Whitway, J	2 / 3 66.6%				
33 - Johnson, G	4 / 7 57.1%				
25 - Crain, Jam	1 / 1 100.0%				
55 - Smith, Jon	0 / 3 0.0%				
Layups	1-9 Ft	10-15 Ft	Over 15 Ft	3 Pointers	Total
5 / 5	2 / 5	3 / 4	2 / 7	0 / 2	12 / 24
83.3%	40.0%	75.0%	28.6%	0.0%	50.0%

BOX SCORE: * OFFICIAL FIRST HALF * Date: 03-18-88 Site: State Tourney, Louisville Attendance: 17,565

Team: Warren East

NO.	NAME	TOTAL FG		3-POINT		FT	FTA	REB			PF	TP	A	TO	BLK	S	MIN
		FG	FBA	FG	FBA			O	D	T							
25	Dunn, Corey	2 / 4	0 / 0	1	2	0	0	0	2	2	2	0	0	0	0	15	
55	Whitney, Jeff	1 / 4	0 / 0	0	0	0	0	1	3	4	1	0	1	1	0	16	
51	Jones, Monty	1 / 1	0 / 0	1	2	0	0	0	0	0	2	3	0	2	0	9	
21	Compton, Brian	0 / 2	0 / 0	0	0	0	0	0	1	1	2	0	1	3	1	10	
33	Johnson, Greg	5 / 7	0 / 0	0	1	0	1	0	4	4	0	12	0	2	0	16	
25	Crain, James	0 / 0	0 / 0	0	0	0	0	1	0	1	1	0	0	0	0	7	
35	Smith, Jonathan	0 / 0	0 / 0	0	0	0	0	0	0	0	0	0	0	0	0	2	
11	Sorrell, Ervin	0 / 0	0 / 0	0	0	0	0	0	0	0	0	0	1	0	0	4	
TEAM		TOTALS		10 / 18	0 / 0	4	7	2	12	14	8	24	5	8	2	1	80

Percentages: HALF----- FG 10/ 18 55.6% 3-PT. 0/ 0 0.0% FT 4/ 7 57.1%
 Period 1 5/ 9 55.7% 0/ 0 0.0% FT 1/ 2 50.0%
 Period 2 4/ 9 44.4% 0/ 0 0.0% FT 3/ 5 60.0%

Team: Apollo

NO.	NAME	TOTAL FG		3-POINT		FT	FTA	REB			PF	TP	A	TO	BLK	S	MIN
		FG	FBA	FG	FBA			O	D	T							
14	Williams, Eric	1 / 3	0 / 0	1	2	1	2	1	4	5	2	3	0	3	0	16	
23	Thompson, Kevin	3 / 6	1 / 2	7	8	0	1	1	1	1	14	2	0	0	2	14	
45	Beehn, Zane	1 / 2	0 / 0	0	0	0	0	2	0	2	1	2	0	0	0	10	
05	Leachman, A.	0 / 3	0 / 0	1	2	0	0	0	0	1	1	1	0	0	1	16	
12	Johnson, A.	1 / 5	0 / 0	2	2	0	2	2	1	1	4	1	1	0	1	16	
11	Dobbs, Jason	0 / 0	0 / 0	0	0	0	0	0	0	0	0	1	0	0	0	1	
35	Yewell, Jason	1 / 1	0 / 0	0	0	0	0	1	1	0	2	0	0	0	0	7	
TEAM		TOTALS		7 / 20	1 / 2	11	14	3	8	11	6	26	4	4	0	4	80

Percentages: HALF----- FG 7/ 20 35.0% 3-PT. 1/ 2 50.0% FT 11/ 14 78.6%
 Period 1 5/ 13 46.2% 0/ 0 0.0% FT 3/ 4 75.0%
 Period 2 1/ 7 14.3% 1/ 2 50.0% FT 8/ 10 80.0%

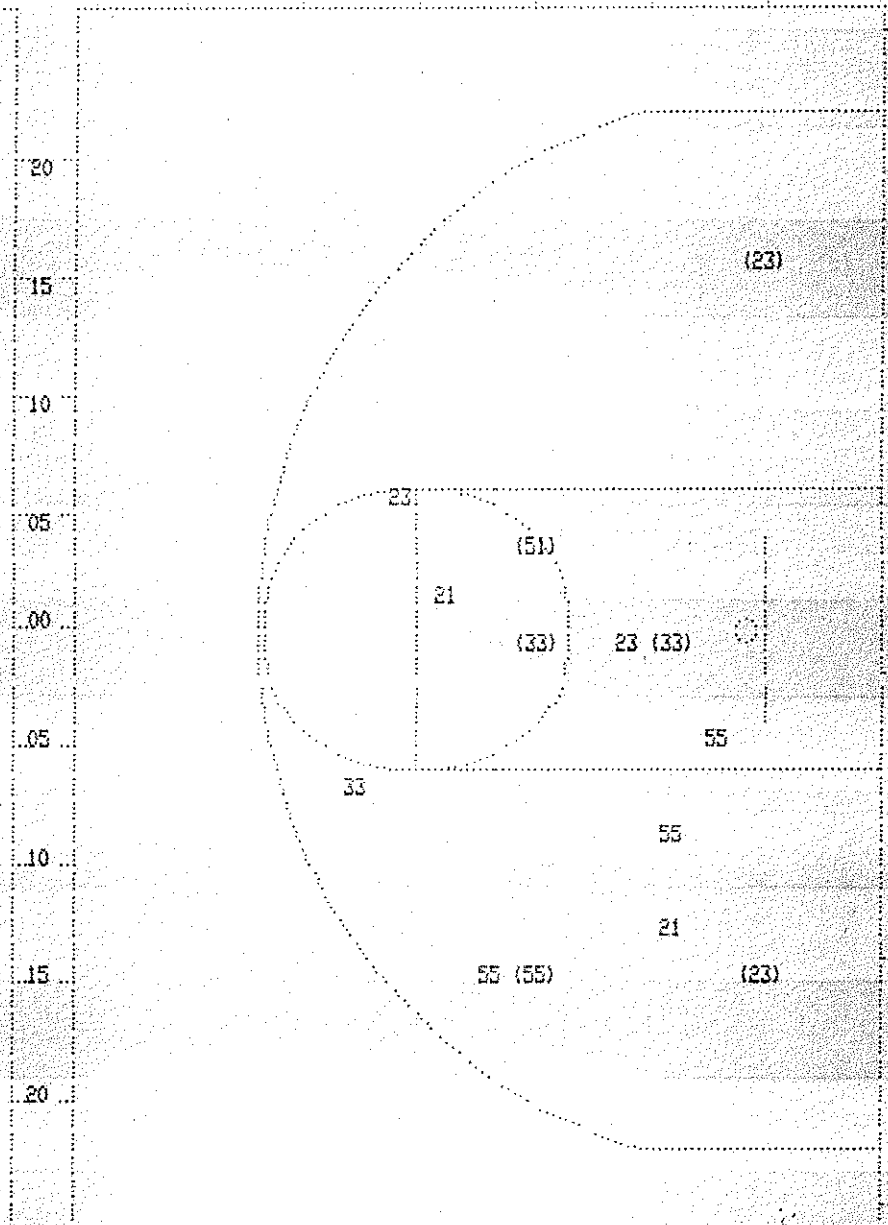
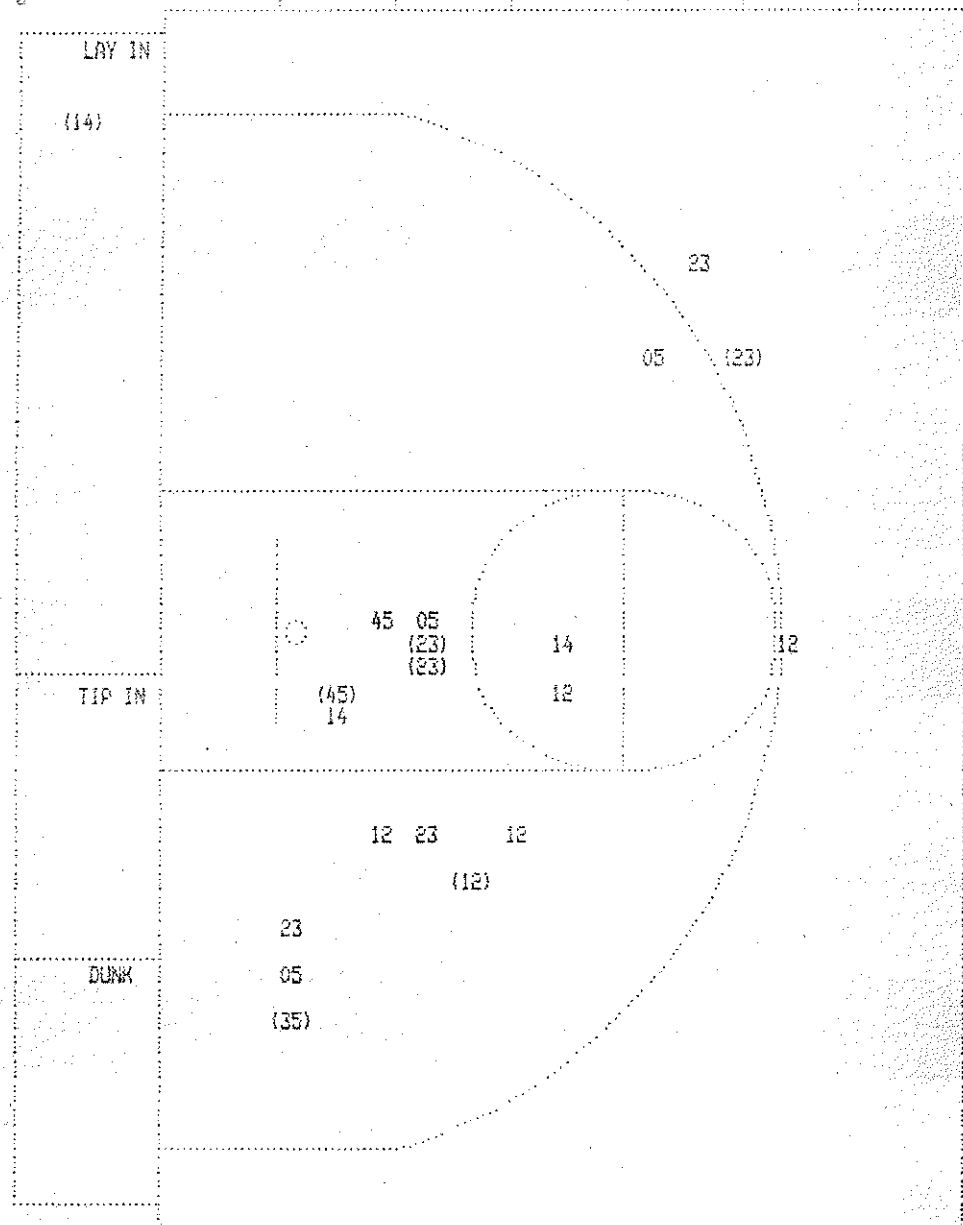
OFFICIALS: Burney Jenkins, Ron Monk, Alt-R. Chasteen
 Technicals: None

SCORE BY PERIODS
 Warren East 13 11 = 24
 Apollo 15 11 = 26

Produced by the K.H.S.A.A. Stat Crew with FINAL III™

Player	Team	Apollo	Time	Score	Warren East	Player	Team		
Leachman, A.,	Thompson, Kevin,	Yewell, Jason,	Johnson, A.,	Williams, Eric	Compton, Brian,	Dunn, Corey,	Johnson, Greg,	Whitney, Jeff,	Crain, James
2	3	Foul on Williams, Eric			2 7:41	Ball to Raiders			
3-4	75.0%	4-6	66.6%	Thompson, Kevin, 2 Free Throws missed 1st made 2nd	2 7:41 15-15*	Crain, James, 2 Free Throws made both	2-2	100%	3-4 75.0%
1	4	Foul on Leachman, A.,			2 7:00	Foul on Dunn, Corey			
3-5	60.0%	7-14	50.0%	3 pt 22 ft Right Angle Jump shot by Thompson, Kevin	2 7:00 *16-15				
1	4	Assist by Johnson, A.			2 6:51				
5-6	83.3%	6-8	75.0%	Thompson, Kevin, 1 & Bonus made both	2 5:17 19-17*	14 ft Right Base Line Jump shot by Dunn, Corey	2-3	66.6%	7-12 58.3%
1-2	50.0%	7-10	70.0%	Williams, Eric, 1 & Bonus made 1st missed 2nd	2 5:45	Foul on Crain, James			
1	5	Foul on Thompson, Kevin			2 5:45	Sub In: Jones, Monty Out: Crain, James			
2-2	100%	9-12	75.0%	Johnson, A., 2 Free Throws made both	2 5:45 *21-17				
1	6	Foul on Johnson, A.			2 5:07 21-19*	Layup Off Fast Break by Johnson, Greg	4-4	100%	8-14 57.1%
7-8	87.5%	11-14	78.5%	Thompson, Kevin, 1 & Bonus made both	2 4:59	Foul on Jones, Monty			
1	5	Sub In: Beehn, Lane Out: Yewell, Jason			2 4:59 *22-19				
2-2	100%	9-12	75.0%	Johnson, A., 2 Free Throws made both	2 4:27 22-21*	Driving Layup by Johnson, Greg	5-5	100%	9-15 60.0%
1	6	Foul on Johnson, A.			2 4:26	Foul on Compton, Brian			
7-8	87.5%	11-14	78.5%	Thompson, Kevin, 1 & Bonus made both	2 3:53	Sub In: Sorrell, Ervin Out: Compton, Brian			
1	5	Sub In: Yewell, Jason Out: Williams, Eric			2 3:53 22-22*	Dunn, Corey, 2 Free Throws missed 1st made 2nd	1-2	50.0%	4-6 66.6%
2-2	100%	9-12	75.0%	Johnson, A., 2 Free Throws made both	2 3:19	Foul on Jones, Monty			
1	6	Sub In: Beehn, Lane Out: Yewell, Jason			2 3:19 *24-22				
7-8	87.5%	11-14	78.5%	Thompson, Kevin, 1 & Bonus made both	2 2:41	Johnson, Greg, 1 & Bonus missed 1st			
1	5	Sub In: Yewell, Jason Out: Williams, Eric			2 2:21				
2-2	100%	9-12	75.0%	Johnson, A., 2 Free Throws made both	2 0:39 24-24*	8 ft Lane Jump shot by Johnson, Greg	6-6	100%	10-17 58.8%
1	6	Sub In: Beehn, Lane Out: Yewell, Jason			2 0:30	Assist by Sorrell, Ervin			
7-8	87.5%	11-14	78.5%	Thompson, Kevin, 1 & Bonus made both	2 0:30	Foul on Dunn, Corey			
1	5	Sub In: Yewell, Jason Out: Williams, Eric			2 0:30	Sub In: Crain, James Out: Dunn, Corey			
2-2	100%	9-12	75.0%	Johnson, A., 2 Free Throws made both	2 0:30 *26-24				
1	6	Sub In: Beehn, Lane Out: Yewell, Jason							

Apollo				Time	Score	Warren East	Warren East			
Player	Team	Player	Team				Player	Team	Player	Team
Williams, Eric	Thompson, Kevin	Beehn, Zane	Leachman, A., Johnson, A.			Dunn, Corey	Whitney, Jeff	Jones, Monty	Compton, Brian	Johnson, Greg
			Ball to Eagles							
1-1	100%	1-1	100%	4 ft Lane Jump shot by Thompson, Kevin	7:45	*2-0				
					7:05					
1-2	50.0%	1-2	50.0%	Leachman, A., 2 Free Throws made 1st missed 2nd	7:05	*3-0				
					6:35	3-2*	9 ft Lane Jump shot by Jones, Monty	1-1	100%	1-3 33.3%
							Assist by Dunn, Corey	1		1
		1		Player Control Foul on Williams, Eric	6:17					
					5:57	3-4*	16 ft Right Side Jump shot by Whitney, Jeff	1-1	100%	2-4 50.0%
							Assist by Compton, Brian	1		2
1-1	100%	2-3	66.6%	Turnaround Layup by Williams, Eric	5:37	*5-4				
		1		Assist by Thompson, Kevin	5:27	5-5*	Driving Layup by Johnson, Greg	1-1	100%	3-5 60.0%
							Assist by Dunn, Corey	2		3
		2		Foul on Beehn, Zane	4:48					
1-1	100%	3-6	50.0%	2 ft Lane Follow by Beehn, Zane	4:48	5-7*	Jones, Monty, 2 Free Throws made 1st missed 2nd	1-2	50.0%	1-2 50.0%
2-3	56.6%	4-7	57.1%	4 ft Lane Driving by Thompson, Kevin	4:31	*7-7				
					4:14	*9-7				
					3:54		Sub In: Crain, James Out: Jones, Monty			
					3:24		Foul on Compton, Brian	2		2
					3:24					
1-3	33.3%	5-10	50.0%	Sub In: Dobbs, Jason Out: Thompson, Kevin	2:42	*11-7				
		2		12 ft Left Side Jump shot by Johnson, A.						
				Assist by Dobbs, Jason						
					2:38	11-9*	16 ft Left Base Line Driving by Dunn, Corey	1-2	50.0%	4-6 66.6%
					2:07		Sub In: Smith, Jonathan Out: Compton, Brian			
					2:07					
				Sub In: Thompson, Kevin Out: Dobbs, Jason	1:29	11-11*	Reverse Lay Up Off Fast Break by Johnson, Greg	2-2	100%	5-8 62.5%
					1:02		Foul on Whitney, Jeff	1		3
2-2	100%	3-4	75.0%	Thompson, Kevin, 2 Free Throws made both	1:02	*13-11				
				Sub In: Yewell, Jason Out: Beehn, Zane	1:02					
					0:42	13-13*	2 ft Lane Turnaround by Johnson, Greg	3-3	100%	6-9 66.6%
1-1	100%	6-13	46.1%	16 ft Left Base Line Jump shot by Yewell, Jason	0:04	*15-13				
		3		Assist by Thompson, Kevin						



Apollo			Player		
14 - Williams,	1 / 3	33.3%	35 - Yewell, Ja	1 / 1	100.0%
23 - Thompson,	3 / 6	50.0%			
45 - Beehn, Zan	1 / 2	50.0%			
05 - Leachman,	0 / 3	0.0%			
12 - Johnson, A	1 / 5	20.0%			
Layups	1-9 Ft	10-15 Ft	Over 15 Ft	3 Pointers	Total
1 / 1	3 / 8	1 / 6	1 / 3	1 / 2	7 / 20
100.0%	37.5%	16.7%	33.3%	50.0%	35.0%

Warren East			Player		
23 - Dunn, Core	2 / 4	50.0%			
55 - Whitney, J	1 / 4	25.0%			
51 - Jones, Mon	1 / 1	100.0%			
21 - Compton, B	0 / 2	0.0%			
33 - Johnson, G	6 / 7	85.7%			
Layups	1-9 Ft	10-15 Ft	Over 15 Ft	3 Pointers	Total
4 / 4	3 / 6	1 / 4	2 / 4		10 / 18
100.0%	50.0%	25.0%	50.0%		55.6%